

**VILLAGE OF HORTONVILLE
PUBLIC WORKS COMMITTEE
3-5-2026 DRAFT MEETING MINUTES**

Chairperson Shauna Keel called the meeting to order at 4:59 p.m. in the Community Center at 531 N. Nash St., Hortonville, Wisconsin.

Members present: President Jeanne Bellile, Trustees Shauna Keel, Julie Arendt Vanden Heuvel Bob Jewell, and Carrie Lathrop

Members excused:

Officials/Staff present: Administrator Nathan Treadwell, Director of Public Works Aaron Steber and Utility Clerk Kaytlin Hooyman

1. Call to Order
2. Preregistered Citizens to be heard. – LIMIT 5 MINUTES
 - A. State name and address
 - B. Comments to be limited to 5 minutes
 - C. Pursuant to WI Statutes 19.83(2) and 19.84(2), The Board's role is to listen to public comments, and not to ask questions, discuss, or take action regarding pre-registered citizens' comments.

3. **Approval of 11-6-2025 Public Works Meeting Minutes**

Motion Trustee Jewel & President Bellile to approve November 6, 2025, minutes. Unanimous voice vote motion carried.

4. **Discussion on purchase of Trail Snow Removal Equipment**

DPW Steber stated that the Village is looking for an ATV for the two miles of trails that we will be responsible for and received four quotes (attached in packet). It needs to be small enough to fit on the trails but also be able to be utilized during all seasons. Best quote was a diesel with a V plow included in the packet for \$41,593. We currently have \$60,000 allocated to Public Works for large expenses such as this. Trustee Arendt Vanden Heuvel asked about the purchase of a skid steer accessory instead and wondered if we had one or two snow removal machines currently. Also, she inquired about if the \$60,000 is going to cover the equipment vehicle being requested in next agenda topic as well and if this replaces the Gator. DPW Steber said it would not replace the Gator, we can investigate the suggestion of the skid steer, and there is also a reserve for extra funds if needed as the equipment truck is being suggested from the \$60,000. We would be keeping the Gator in the garage at the municipal building to utilize at administration building. Trustee Arendt Vanden Heuvel asked if we truly needed two snow removal machines, who will be responsible for cleaning the trails, does this pull precedence over the bucket truck or the water truck and can this wait for Phase 2 instead of Phase 1 of the project? Administrator Treadwell stated that downtown will also be wider and DPW Steber stated that it is important to take care of this during Phase 1 as it will be the learning curve. Trustee Jewel inquired if the V plow had any down pressure or did it lift with a wench? DPW Steber stated that he believed with a wench, but he would investigate that. Trustee Jewel also asked about its capacity to push the snow back or if we would need something with more power. DPW Steber stated he would be looking into the snowblower attachment as well. Trustee Arendt Vanden Heuvel asked if the skid steer had those options instead, DPW Steber stated it was also an option to investigate. Trustee Keel pointed out that it needed to have functions for all seasons not just winter again and the possibility of it destroying lawns during winter

usage. President Bellile asked if clean up was going to happen on weekends then as well since residence are going to see this money spent and are going to want to see results. DPW Steber stated that he would be looking to bring on an additional personnel member possibly at some point down the road to assist. Trustee Arendt Vanden Heuvel stated that this might be a bigger discussion for a later date with more information provided. Administrator Treadwell asked for a definition of what information they wanted obtained before the next meeting. Trustee Keel asked for the price for the additional blower attachment. Trustee Arendt Vanden Heuvel asked for pricing on attachments for the skid steer and uses of all the current equipment we have. Administrator Treadwell stated that the skid steer may not be an option due to it being needed elsewhere. Trustee Jewel added that at the end of the day the residents expect the trails to be maintained and we need to figure out how to guarantee that happens.

5. **Discussion on Public Works/Utility Truck Replacement**

DPW Steber started out by stating that the 2006 F150 needs its transmission rebuilt and he obtained a quote from All World Ford for \$6500. President Bellile asked what this truck was utilized for, DPW Steber stated just for Public Works use not for plowing. Trustee Keel asked how many miles were on this truck. DPW Steber did not have exact mileage but estimated at 65,000 miles. Trustee Arendt Vanden Heuvel asked if we could just hold onto the truck we planned to sell, and had removed the decals from, could replace this truck. DPW Steber stated that that truck was now used for garbage at the parks. Trustee Arendt Vanden Heuvel asked for what was in inventory and what each truck was used for now. DPW Steber has a list in his office and could supply that list. Trustee Keel stated that she was struggling with the fact that 2006 is a common vehicle so why only one quote for the repair? President Bellile also stated that she struggled with that fact as well stating that All World Ford was generally known to be high in their quotes as well. DPW Steber stated that they had looked at a procurement site for purchasing another truck to hopefully keep the purchase price lower than purchasing a new truck. Trustee Arendt Vanden Heuvel asked about following a cycle like the PD does. Administrator Treadwell stated that PD was trying to get away from that cycle as it was not looking like a good practice to keep. DPW Steber suggested that this could be a part of a larger discussion, but he wants to stay ahead of it. President Bellile asked again why only one quote was acquired. DPW Steber stated that they went on the procurement site after the quote to find a cheaper replacement. President Bellile asked where everyone stood on the topic. Trustee Lathrop stated she does not think it is smart to throw good money at an old truck but rather get a new quote for a new truck. Trustee Jewel asked where the money was coming from to start with. DPW Steber stated from the Public Works original \$60,000 and the cost savings side savings. Trustee Lathrop asked if he would have enough for both the truck and the UTV. DPW Steber stated yes and he has extra in reserve if needed. DPW Steber asked if a larger discussion was needed about the snow removal in general. Trustee Keel stated yes and more information. Administrator Treadwell asked what all was needed for the next discussion. Trustee Keel asked for three quotes since the purchase is over \$5,000. President Bellile asked for what else would be needed if an emergency purchase came up. Administrator Treadwell stated that it would be hard to predict as they are trying to push the loader off to 2030. Trustee Arendt Vanden Heuvel asked for a price on the sweeper. Administrator Treadwell summed up stating three quotes, price on sweeper, what we currently have in inventory, how each vehicle is utilized, and a map of how lots are plowed. Administrator Treadwell also stated that the current quotes are good until 3/27/2026.

6. **Any other topics for Future Discussion**

No

7. **Comments and Suggestions from citizens present**

No

8. **Adjourn**

Motion President Bellile & Trustee Vanden Heuvel to adjourn. Unanimous voice vote, motion carried. The Public Works Committee adjourned at 5:53 p.m.

Minutes submitted by,

Kaytlin Hooyman
Public Work Clerk.



Imagery ©2026 Airbus, Maxar Technologies, Map data ©2026 Google 50 ft

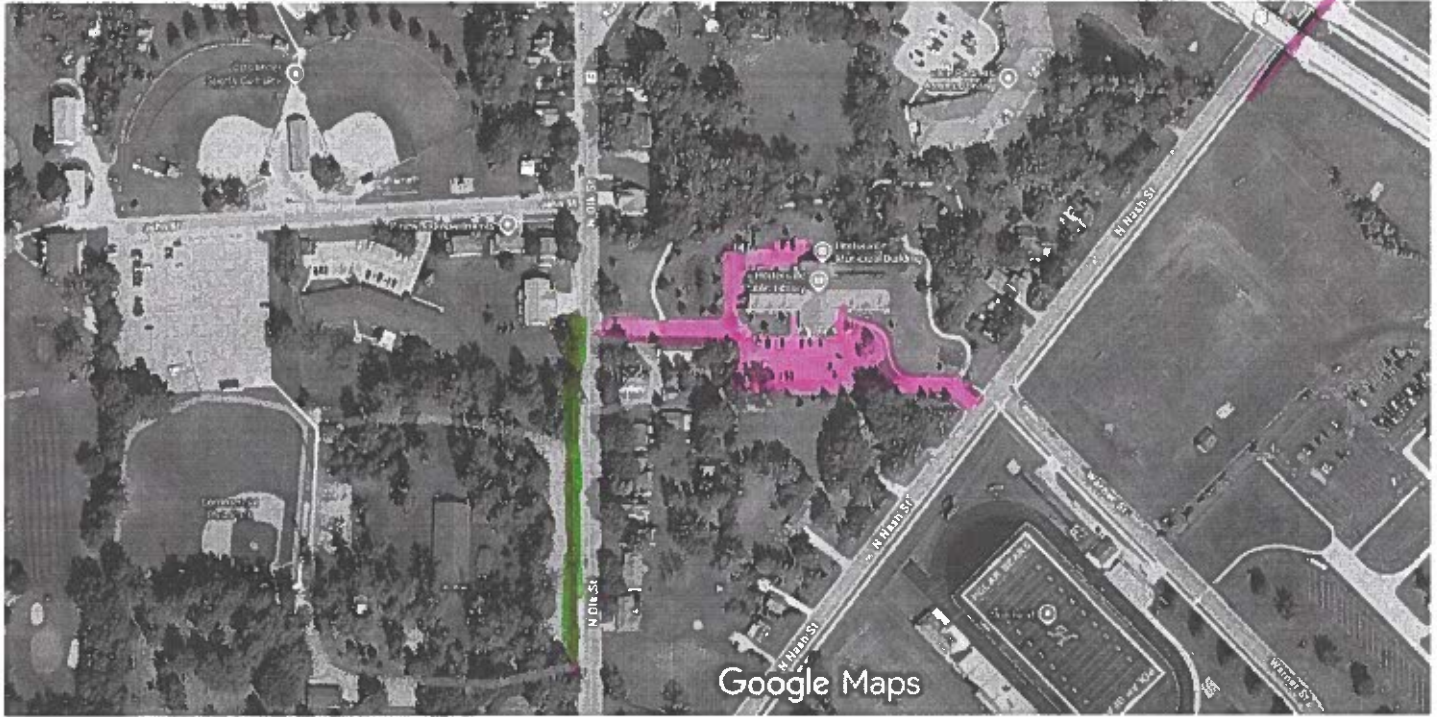
Equipment Used

1. Loader + Pusher
2. Kubota Skidsteer with Pusher
3. Kubota F3080 sidewalk Machine
4. Chevy 2500 with plow and salter

Operation

Sidewalk machine plows everything off the sidewalk (in green) onto the curb. Comes back around and wings it off the curb into the street. As the sidewalk machine is making the windrows, the Loader and skidsteer are clearing everything in pink. After that, the Loader and skid steer begin to clear the windrows on main st. After all snow is removed, The Chevy Salts everything in pink.

Google Maps Commercial & Admin



Imagery ©2026 Airbus, Maxar Technologies, Map data ©2026 Google 100 ft

Equipment Used

Ram 2500

Kubota F2990 Sidewalk Machine

Chevy 2500 with plow and salter
Salt Push Spreader

Operation

Green Line is done with sidewalk machine,
Sidewalk machine is get 2 plow lengths away from Admin building and
Curb. Then sidewalk machine clears all snow from sidewalks into
Parking lots. After that is done, the ram 2500 is used to scrape
and clear parking lot. Chevy 2500 then comes in after to salt
parking lot. While Colton uses salt push spreader on sidewalks.

Google Maps

Main St & Miller Park



Imagery ©2026 Airbus, Maxar Technologies, Map data ©2026 Google 50 ft

Equipment Used

1. Loader & Pusher
2. Kubota F3080 sidewalk machine
3. skidsteer with Pusher
4. Chevy 2500 with plow and salter

Operations

Sidewalk machine clears snow from green onto Road.
Skidsteer and Loader push into stock pile parking Lots.
Opera house and Alley is done with skidsteer along with Miller Park. Following that is salted by the Chevy.

Waste Water Treatment Plant & water Tower



Imagery ©2026 Airbus, Maxar Technologies, Map data ©2026 Google 100 ft

Equipment Used

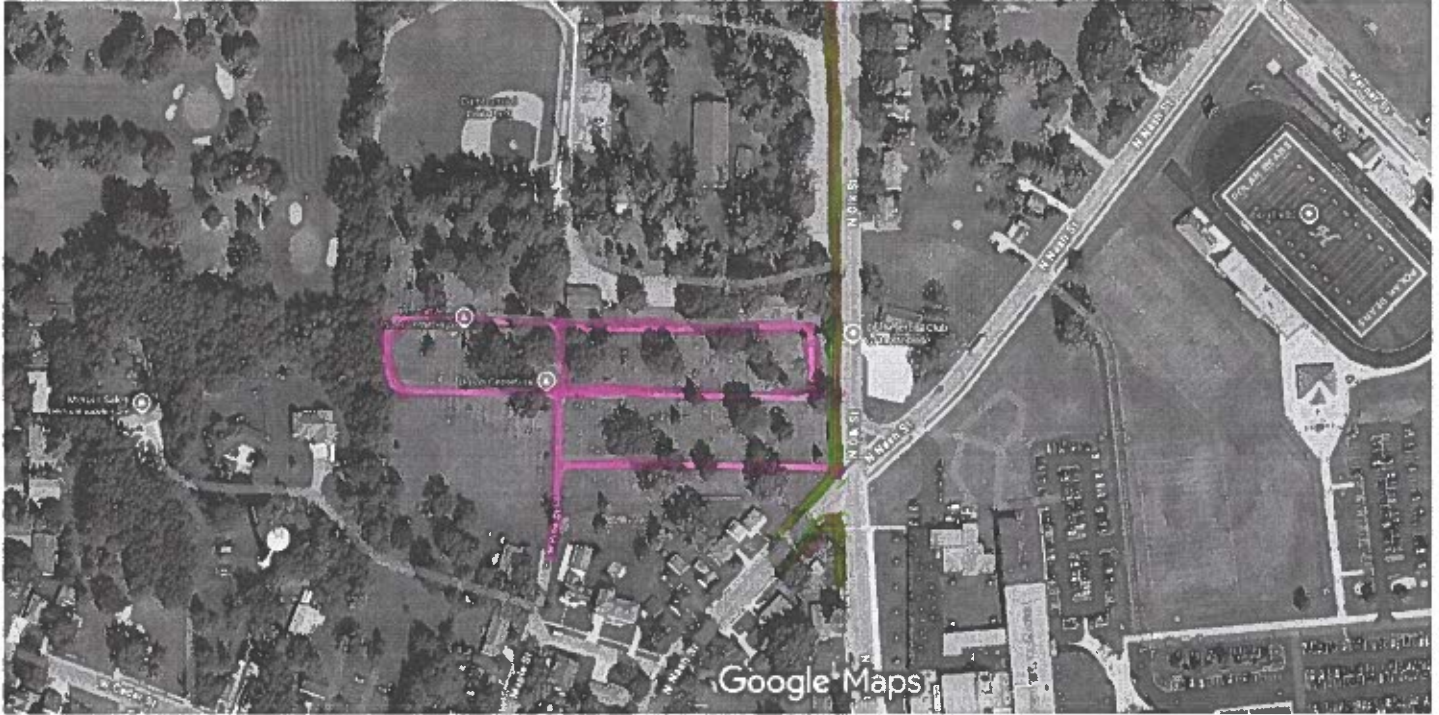
1. Loader & Pusher
2. Chevy 2500 with plow and salter
3. Skid steer and pusher

Operations

The loader and pusher clear the snow at the water tower.
The treatment plant get's done whoever gets back first and salted at the end with the Chevy.

Google Maps

Cemetery & Commercial Club



Imagery ©2026 Airbus, Maxar Technologies, Map data ©2026 Google 100 ft

Equipment Used

1. Chevy 2500 with plow and Salter
2. Kubota F3080 Side walk Machine

Operation

Plow snow in the Cemetery and Salt afterwards.
Side walk machine plows snow to Terrace. (Green).



Imagery ©2026 Airbus, Maxar Technologies, Map data ©2026 Google 50 ft

Equipment Used

1. Loader + Pusher
2. Kubota F8080 sidewalk Machine
3. Kubota Skidsteer
4. Chevy 2500 with plow and salt

Operation

Remove snow off sidewalk with sidewalk Machine onto road. (In Green) come back and wing off the curb. Loader and skidsteer come in after and push to a stock pile parking lot. Alley behind Otter Creek get's done with either skidsteer or chevy plow truck, depends who get's there first. At the end, gets salted by Chevy



imagery ©2026 Airbus, Maxar Technologies, Map data ©2026 Google 100 ft

Equipment Used

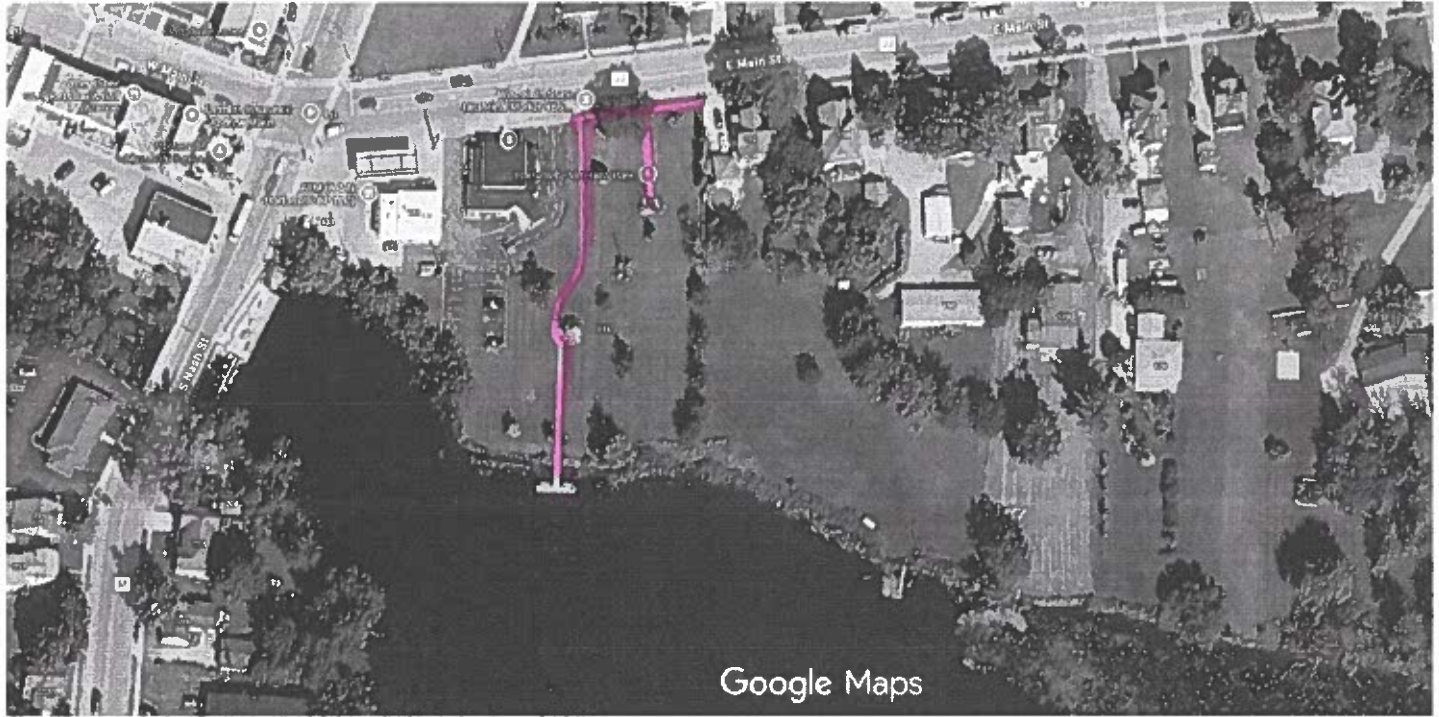
1. Loader + Pusher
2. Chevy 2500 with plow and salter.
3. Kubota F3080 sidewalk Machine.

Operation

Sidewalk Machine plows snow off sidewalk onto Terrace (In Green)
Loader plows Gravel Driveway in Black Otter park into a pile
Chevy 2500 plows Alonzo and well Parking Lot and salts afterwards.

Google Maps

Veterans Park



Imagery ©2026 Airbus, Maxar Technologies, Map data ©2026 Google 50 ft

Equipment Used
F3080 sidewalk machine

Operation

Remove all snow from sidewalk onto the grass.

Alley 3



Imagery ©2026 Airbus, Maxar Technologies, Map data ©2026 Google 50 ft

Equipment Used

1. Chevy 2500 with Plow and Salter

Operation

Clear snow from road and then salt.

Google Maps

Boat Landing



Imagery ©2026 Airbus, Maxar Technologies, Map data ©2026 Google 50 ft

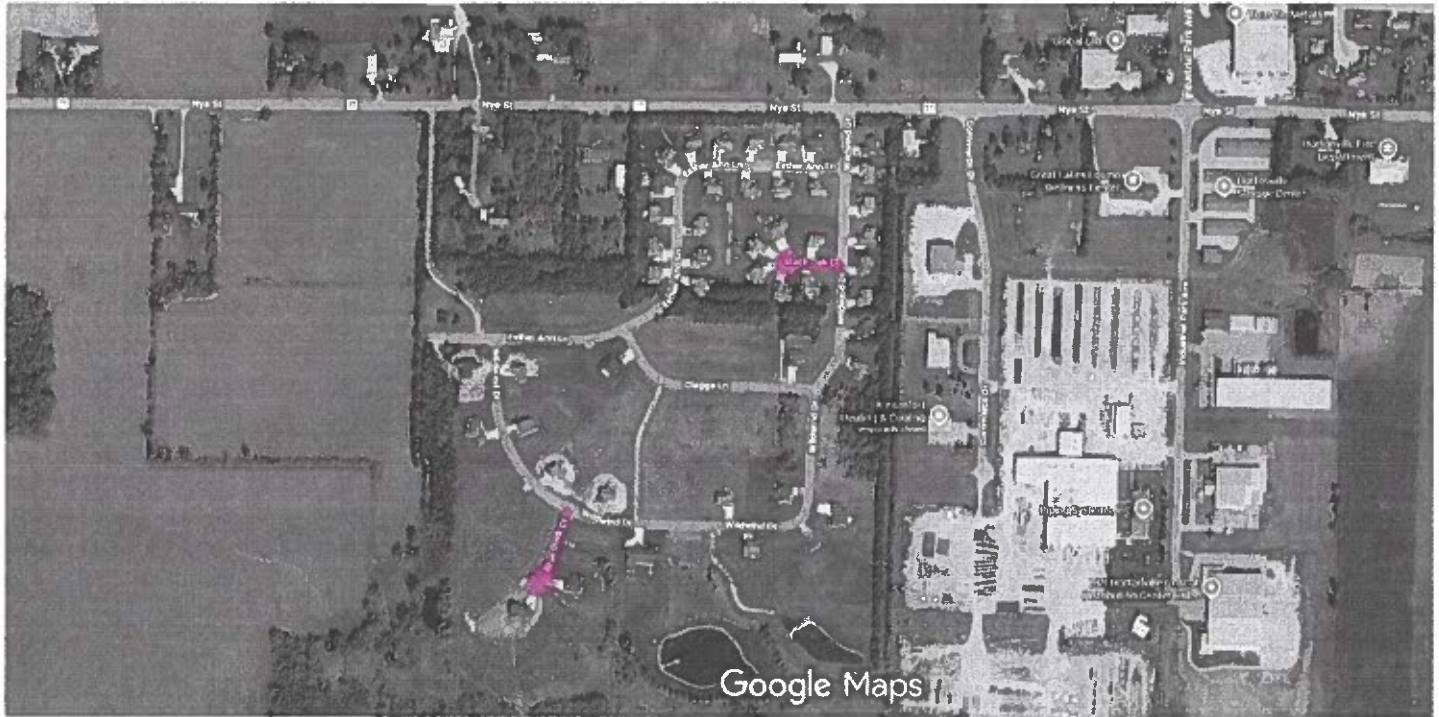
Equipment Used

1. Chevy 2500 with Plow And Salter

Operation

Remove Snow From Parking Lot and Then Salt.

Google Maps Black Oak CT & Blue Duck CT Culd'sac



Imagery ©2026 Airbus, Maxar Technologies, Map data ©2026 Google 200 ft

Equipment Used

1. Loader & Bucket
2. Dump Truck
3. F-350
4. F-550

Operation

Remove Piled Snow From Graders And Haul To Stock Pile Parking Lot.

Google Maps Florence CT + Oak Knoll Ct Curb: sac



Imagery ©2026 Airbus, Maxar Technologies, Map data ©2026 Google 100 ft

Equipment Used

1. Loader + Bucket
2. Dump Truck
3. F-350
4. F-550

Operation

Remove Piled Snow From Graders And Haul To Stock Pile Parking Lot.

Google Maps

Pine Grove Culdillac



Imagery ©2026 Airbus, Maxar Technologies, Map data ©2026 Google 100 ft

Equipment Used

1. Loader & Bucket
2. Dump Truck
3. F-350
4. F-550

Operation

Remove Piled Snow From Graders And Haul to Stock Pile Parking Lot.

Golf Side Ct, & Fountain Ct / W Fountain Ct Culdillac

Google Maps



Imagery ©2026 Airbus, Maxar Technologies, Map data ©2026 Google 100 ft

Equipment Used

1. Loader + Bucket
2. Dump Truck
3. F-350
4. F-550

Operation

Remove piled snow from graders and haul to stock pile parking lot.

Google Maps Lakeview CT Culdisac



Imagery ©2026 Airbus, Maxar Technologies, Map data ©2026 Google 50 ft

Equipment Used

1. Loader & Bucket
2. Dump Truck
3. F-350
4. F-550

Operation

Remove piled snow from graders and haul to stock pile parking lot.

Google Maps

Greenbrier & Ashton Way Culdillac



Imagery ©2026 Airbus, Maxar Technologies, Map data ©2026 Google 100 ft

Equipment Used

1. Loader + Bucket
2. Dump Truck
3. F-350
4. F-550

Operation

Remove Piled Snow from Graders and haul to Stock Pile parking Lot

Google Maps

Jag Ln.



Imagery ©2026 Airbus, Maxar Technologies, Map data ©2026 Google 100 ft

Equipment Used

1. Loader & Pusher

Operation

Clear snow from road.

Stock Pile & Compost



Imagery ©2026 Airbus, Maxar Technologies, Map data ©2026 Google 100 ft

Equipment Used

1. Loader & Pusher

Operation

- Remove snow from stock pile parking lot and pushing up the piles from curbsides.
- Removing snow from compost site that way we can turn compost piles and have an area to dump water break materials.

Village of Hortonville Public Works						
Vehicle List						
Up Dated on 6-12-2026						
Vehicle	Asset Number	Last 4 of Vin #:	Value	Miles/Hours	Condition	Uses
1989 GMC 7000 Utility Truck	484	8482	5,000	19,000	Old, leaks a lot, just put all new hoses on the boom.	Tree-trimming, hanging banners, etc.
1998 Ford F-250	128	2377	5,000	81,936	Only gets used in summer to water trees and brine in the winter, rusty, speedometer doesn't work.	Streets truck, everyday use such as emptying out village garbage bins, hauling recycling cans to new builds, hauling extra equipment to job locations (to small/old to use for plowing)
2003 Ford F-550	129	5887	35,715	47,793	Old/rust on most of the truck, no gas gauge/speedometer	Used for hauling snow out of cul-de-sacs, trailering wood and wood chips from wood chipper and brush pick-up. Used for picking up Christmas Trees, leaves/yard wasted in spring and fall and bigger projects we need to haul larger loads of material. Transport woodchips for around Village parks and admin building, boulders for projects, and soil and sod for yard restoration activities
2006 Ford F-150 4x4	304	2854	5,000	65,025	Bad, Transmission blew up has no reverse	Water/GIS truck, everyday uses include locating manholes, curb stops, laterals, etc. with the tremble unit, updating locations of storm sewer inlets, pipe outlet locations, etc. General GIS mapping updates. Backup snow plowing truck used to haul salt
2009 International dump truck		1060	40,000	38784	Good	Used for hauling snow out of cul-de-sacs, trailering wood and wood chips from wood chipper and brush pick-up. Used for picking up Christmas Trees, leaves/yard wasted in spring and fall and bigger projects we need to haul larger loads of material. Transport woodchips for around Village parks and admin building, boulders for projects, and soil and sod for yard restoration activities
2013 Ford F-250	435	6036	19,360	42,273	Not bad condition, New tires, needs upgrades, gas gustar.	Water Utility Truck, everyday use such as changing meters, collecting water samples, inspecting wells. All tools to shut off water mains for street projects, inspecting/sampling lift stations and water tower, crane wench to lift pumps out of lift stations
2016 Ford Police interceptor		7451	9,030	104,956	Decent, needs new tires	Used by crews for transportation
2017 Chevy 2500 HD	485	4836	21,030	28,288	Great Condition.	Streets truck for everyday use such as fixing street poles, putting in signs, hanging signs on poles, hauling equipment (mini-excavator, lawnmowers, skid steer) and tools to job sites. Used in snow operations on main street, adim, plant, cemetery, nash, alonzo, alley #3, and boat landing
2020 Ram 2500 man Trades	531	8167	26,780	19,537	Great Condition.	Used by water department to deliver samples to labs, inspecting water and sewer lines, meetings with reps and subcontractors. Also used during snow removal operations to plow Admin building and parking lot
2022 Ford F-350	553		35,000	4,928	Great Condition.	Used for hauling snow out of cul-de-sacs, trailering wood and wood chips from wood chipper and brush pick-up. Used for picking up Christmas Trees, leaves/yard wasted in spring and fall and bigger projects we need to haul larger loads of material. Transport woodchips for around Village parks and admin building, boulders for projects, and soil and sod for yard restoration activities
Komatsu loader w/ snow pusher					good condition, just had a fix on loader tire, pusher rubber edge has been dropped down and should be able to get a couple years out of it yet	Every day uses for compost site including loading up brush and leaves, loading salt for salt trucks, gravel and soil for larger projects. Assists with unloading heavy deliveries and lifting heavier loads to large for smaller equipment. Used as a lift to get to banners, lights, and road signs. Plowing downtown main street, pine street parking lot, compost site, water tower, alley 1, post office parking lot, natures haven lift station. Pushing all snow piles to make room for next snowfall, etc.
Kubota Skid steer w/ snow pusher					skid steer great condition, pusher is in decent shape, replaced a few things on it this year	Used for projects needing grading, dirt/gravel, clearing brush, maintaining trail behind admin building, stump grinding, post hole digging, yard restorations, etc. Used for snow removal at Well 1 parking lot, opera house, alley 3, assists on cleaning up tight corners throughout the Village
Kubota sidewalk machine with plow and snow blower					machine is getting rusty, plow is normal wear and tear, snow blower needed to be welded and fixed	Snow removal for main street, miller park, nash street, alonzo, veterans park
Kubota sidewalk machine with plow and snow blower(admin)					everything is in great condition	Snow removal for sidewalks and parking lots at admin building, cemetery
Gator					good condition	General transportation between smaller job sites with tools for trimming, shovels, etc. Smaller box for adding soil to eroded areas around parks, etc.

Public Works Committee 3/2/2026

Public Works Truck:

A few weeks ago, the transmission went out on our 2006 Ford F150. It was taken to the dealership and quoted \$6,500 for transmission re-build with no guarantee they'd be able to find the parts necessary. With a working transmission the truck is only worth approximately \$5,000 - \$7,000 dollars so rebuilding the transmission on it is not a good option.

Current 2006 F150:



Below is a list of five currently available trucks that could be utilized for plowing (we have a plow ready to be installed) as well as used to pull a hydraulic valve exerciser/vac trailer we have in budget for next year's utility budget.

Repair Estimate

PREPARED FOR
Village VILLAGE OF HORTONVILLE

(920) 419-7822

Service Advisor

Brian Taylor (103)
brian.taylor@gyautogroup.com
9207102000

Date 04/13/2026 02:11 PM

2006 FORD F-150

VIN 1FTRF14V06NA92854

Mileage 65,022

RO# 37662

Service Name	Price
[Primary]: 99P : 99P (I) BASIC MULTI POINT VISUAL INSPECTION	\$0.00
[Primary]: DIAG : DIAG C/S: client states no reverse	\$180.00
Transmission Replacement (Automatic)	\$6205.00
Printed on April 13, 2026	
Quote expires on May 13, 2026	

Subtotal	\$6385.00
Shop Charges	\$84.88
Tax	\$355.84
Total	\$6825.72



Gregg young Ford
N2484 GREENVILLE DR
HORTONVILLE, WI 54944-8713

111-111-1111



Auto Select - Hortonville
 330 E Main St
 Hortonville, WI. 54944
 Phone: 920-779-4199 Fax: 920-779-4199

ESTIMATE #

373357

ESTIMATE FOR SERVICES

Estimate Date : 04/13/2026

HORTONVILLE - VILLAGE OF

2006 Ford - Pickup F150 - 5.4L, V8 (330CI) VIN(5)

Lic # : - WI

Odometer In: 0

Mobile 1: 920-570-1779

VIN # :

Part Description / Number	Qty	Sale	Ext	Labor Description	Hours	Extended
Automatic Transmission Assembly T4R75W5405T4	1.00	4,039.99	4,039.99	TRANSMISSION ASSEMBLY - Remove & Replace - F150, 4WD	10.00	1,498.70
Transmission Fluid - Synthetic LV MV - Qt ATFMV	14.00	9.00	126.00			
Shop Supplies, Environmental & Disposal Fees			19.87			

Parts/Supplies: 4,185.86

Labor: 1,498.70

HazMat/Fees: 0.00

Tax: 312.65

Total : \$ 5,997.21

Motor vehicle repair practices are regulated by chapter ATCP 132, Wis. Adm. Code, administered the Bureau of Consumer Protection, Wisconsin Dept. of Agriculture, Trade and Consumer Protection, P.O. Box 8911, Madison, Wisconsin 53708-8911

This vehicle received without face to face customer contact.

Shop Representative _____

Having authority to do so I hereby order the above products and services, parts and labor and grant permission to you and/or your employees to operate the vehicle described for the purpose of testing and/or inspection. I agree to pay cash when the work is completed or to pay on other terms satisfactory to you. Until paid in full, the amount owing on this work shall constitute a lien on the motor vehicle. If collection is made by suit or otherwise, I agree to pay storage and collection and reasonable attorney's fees.

Customer Sign: _____
 Date: _____

YOU ARE ENTITLED TO A PRICE ESTIMATE FOR THE REPAIRS YOU HAVE AUTHORIZED. THE REPAIR PRICE MAYBE LESS THAT THE ESTIAMTE, BUT WILL NOT EXCEED THE ESTIMATE WITHOUT YOUR PERMISSION. YOUR SIGNATURE WILL INDICATE YOUR ESTIMATE SELECTION.

1. I request an estimate in writing before you begin repair

2. Please proceed with repairs, but call me before continuing if the price will exceed \$ _____

3. I do not want an estimate _____

Do you want the replaced parts you are entitled to? Yes No

Payment will be made by Cash Check Credit Card Charge

Call when vehicle is ready Yes No



Napleton 151 Auto Group

Erin Damico | 920-623-5831 | edamico@napleton.autos

Village of Hortonville

Prepared For: Hunter Gruenwald

920-570-1779

maintenance@vo.hortonville.com

Village of Hortonville C57 8 BASE Fleet 2026 Chevrolet Silverado 2500HD (CK20943) 4WD Crew Cab
172 Work Truck



Erin Damico
Napleton Chevrolet Columbus
800 Maple Ave
Columbus, WI 53925
920-623-5831
edamico@napleton.autos

State Contract 505ENT-M25-VEHICLES-01



Napleton 151 Auto Group

Erin Damico | 920-623-5831 | edamico@napleton.autos

Village of Hortonville C57 8 BASE Fleet 2026 Chevrolet Silverado 2500HD (CK20943) 4WD Crew Cab 172 Work Truck (✔ Complete)

Quote: Village of Hortonville C57 Silverado 2500 Crew

Quote Worksheet

	MSRP
Base Price	\$52,100.00
Dest Charge	\$2,595.00
Total Options	\$12,567.00
Subtotal	\$67,262.00
Title & Registration (New Municipal Plates)	\$219.50
Delivery to Hortonville	\$109.00
Subtotal Pre-Tax Adjustments	\$328.50
Less Customer Discount	(\$6,825.00)
Subtotal Discount	(\$6,825.00)
Trade-In	\$0.00
Excluded from Sales Tax	Subtotal Trade-In
	\$0.00
Taxable Price	\$60,765.50
Sales Tax	\$0.00
Subtotal Taxes	\$0.00
Subtotal Post-Tax Adjustments	\$0.00
Total Sales Price	\$60,765.50

Dealer Signature / Date

Customer Signature / Date

Selected Model and Options

MODEL		
CODE	MODEL	MSRP
CK20943	2026 Chevrolet Silverado 2500HD 4WD Crew Cab 172" Work Truck	\$52,100.00

COLORS	
CODE	DESCRIPTION
G7C	Red Hot

At the user's request, prices for this vehicle have been formulated on the basis of Initial Pricing for the vehicle, however GM cannot guarantee that Initial Pricing is available. This document contains information considered Confidential between GM and its Clients uniquely. The information provided is not intended for public disclosure. Prices, specifications, and availability are subject to change without notice, and do not include certain fees, taxes and charges that may be required by law or vary by manufacturer or region. Performance figures are guidelines only, and actual performance may vary. Photos may not represent actual vehicles or exact configurations. Content based on report preparer's input is subject to the accuracy of the input provided.

Data Version: 27916. Data Updated: Mar 6, 2026 2:47:00 AM UTC.



Napleton 151 Auto Group

Erin Damico | 920-623-5831 | edamico@napleton.autos

Village of Hortonville C57 8 BASE Fleet 2026 Chevrolet Silverado 2500HD (CK20943) 4WD Crew Cab 172 Work Truck (✔ Complete)

Quote: Village of Hortonville C57 Silverado 2500 Crew

NOTE

CODE	DESCRIPTION	MSRP
**	** FEATURE AVAILABILITY WILL CHANGE THROUGHOUT THE MODEL YEAR. SEE THE WINDOW LABEL OF A SPECIFIC VEHICLE TO DETERMINE ITS CONTENT **	\$0.00

BODY CODE

CODE	DESCRIPTION	MSRP
E63	Durabed, pickup bed (STD)	Inc.

EMISSIONS

CODE	DESCRIPTION	MSRP
FE9	Emissions, Federal requirements	\$0.00

ENGINE

CODE	DESCRIPTION	MSRP
L8T	Engine, 6.6L V8 with Direct Injection and Variable Valve Timing, gasoline, (401 hp [299 kW] @ 5200 rpm, 464 lb-ft of torque [629 N-m] @ 4000 rpm) (STD)	Inc.

TRANSMISSION

CODE	DESCRIPTION	MSRP
MKM	Transmission, 10-Speed automatic (STD) (Standard with (L8T) 6.6L V8 gas engine.)	\$0.00

GVWR

CODE	DESCRIPTION	MSRP
JGJ	GVWR, 11,050 lbs. (5012 kg) (Included and only available with CC20743 model and (L5P) Duramax 6.6L Turbo-Diesel V8 engine with 18" or 20" wheels or CK20943 model and (L8T) 6.6L V8 gas engine with 18" or 20" wheels.)	Inc.

AXLE

CODE	DESCRIPTION	MSRP
GT4	Rear axle, 3.73 ratio (Requires (L8T) 6.6L V8 gas engine. Not available with (L5P) Duramax 6.6L Turbo-Diesel V8 engine.)	\$0.00

At the user's request, prices for this vehicle have been formulated on the basis of Initial Pricing for the vehicle, however GM cannot guarantee that Initial Pricing is available. This document contains information considered Confidential between GM and its Clients uniquely. The information provided is not intended for public disclosure. Prices, specifications, and availability are subject to change without notice, and do not include certain fees, taxes and charges that may be required by law or vary by manufacturer or region. Performance figures are guidelines only, and actual performance may vary. Photos may not represent actual vehicles or exact configurations. Content based on report preparer's input is subject to the accuracy of the input provided.
Data Version: 27916. Data Updated: Mar 6, 2026 2:47:00 AM UTC.



Napleton 151 Auto Group

Erin Damico | 920-623-5831 | edamico@napleton.autos

Village of Hortonville C57 8 BASE Fleet 2026 Chevrolet Silverado 2500HD (CK20943) 4WD Crew Cab 172 Work Truck (✔ Complete)

Quote: Village of Hortonville C57 Silverado 2500 Crew

PREFERRED EQUIPMENT GROUP

CODE	DESCRIPTION	MSRP
1WT	Work Truck Preferred Equipment Group includes standard equipment	\$0.00

WHEELS

CODE	DESCRIPTION	MSRP
PYT	Wheels, 18" (45.7 cm) painted steel	Inc.

TIRES

CODE	DESCRIPTION	MSRP
QF6	Tires, LT275/70R18E all-terrain, blackwall (Not available with (ZW9) pickup bed delete. Included with (ANQ) Alaskan Snow Plow Special Edition.)	Inc.

SPARE TIRE

CODE	DESCRIPTION	MSRP
ZYG	Tire, spare LT275/70R18 all-terrain, blackwall (Included with (ANQ) Alaskan Snow Plow Special Edition. Included and only available with (QF6) LT275/70R18E all-terrain, blackwall tires with (E63) Durabed, pickup bed.)	Inc.

PAINT

CODE	DESCRIPTION	MSRP
G7C	Red Hot	\$0.00

SEAT TYPE

CODE	DESCRIPTION	MSRP
AZ3	Seats, front 40/20/40 split-bench with covered armrest storage and under-seat storage (lockable) (STD)	\$0.00

SEAT TRIM

CODE	DESCRIPTION	MSRP
H2G	Jet Black, Vinyl seat trim	\$0.00

At the user's request, prices for this vehicle have been formulated on the basis of Initial Pricing for the vehicle, however GM cannot guarantee that Initial Pricing is available. This document contains information considered Confidential between GM and its Clients uniquely. The information provided is not intended for public disclosure. Prices, specifications, and availability are subject to change without notice, and do not include certain fees, taxes and charges that may be required by law or vary by manufacturer or region. Performance figures are guidelines only, and actual performance may vary. Photos may not represent actual vehicles or exact configurations. Content based on report preparer's input is subject to the accuracy of the input provided.
Data Version: 27916. Data Updated: Mar 6, 2026 2:47:00 AM UTC.



Napleton 151 Auto Group

Erin Damico | 920-623-5831 | edamico@napleton.autos

Village of Hortonville C57 8 BASE Fleet 2026 Chevrolet Silverado 2500HD (CK20943) 4WD Crew Cab 172 Work Truck (✔ Complete)

Quote: Village of Hortonville C57 Silverado 2500 Crew

RADIO

CODE	DESCRIPTION	MSRP
IOR	Audio system, Chevrolet Infotainment 3 system 7" diagonal HD color touchscreen, AM/FM stereo, Bluetooth audio streaming for 2 active devices, voice command pass-through to phone, Wireless Apple CarPlay and Wireless Android Auto compatibility (STD)	\$0.00

ADDITIONAL EQUIPMENT - PACKAGE

CODE	DESCRIPTION	MSRP
PCV	WT Convenience Package includes (QT5) EZ Lift power lock and release tailgate, (AKO) tinted windows, (C49) rear-window defogger, (DBG) power trailer mirrors with heated upper glass and manual extending/folding (Required on Regular Cab models with (L5P) Duramax 6.6L Turbo-Diesel V8 engine. (DBG) trailer mirrors may be upgraded to (DWI) trailer mirrors or (DLN) mirrors. Regular Cab models require (DWI) trailer mirrors or (DLN) mirrors.)	Inc.
VYU	Snow Plow Prep/Camper Package includes (KW5) 220-amp alternator, includes increased front GAWR on Heavy Duty models, (NZZ) skid plates (transfer case and oil pan), pass through dash grommet hole and roof emergency light provisions. Contact GM Upfitter Integration at www.gmupfitter.com for plow installation details and assistance. Note: if ordered for Camper usage, recommend ordering (UY2) Trailering wiring provisions (Requires 4WD model. Upgradeable to (KHF) Dual alternators (220-amp primary, 170-amp auxiliary). Included with (ANQ) Alaskan Snow Plow Special Edition. Not available with (F60) Heavy Duty Front Spring/Camper Package.)	\$300.00

ADDITIONAL EQUIPMENT - MECHANICAL

CODE	DESCRIPTION	MSRP
K4Z	Battery, auxiliary, 700 cold-cranking amps/70 Amp-hr (Requires (L8T) 6.6L V8 gas engine and either (KW5) 220-amp alternator or (KHF) dual alternators. Not available with (KW7) 170-amp alternator.)	\$135.00
KW5	Alternator, 220 amps (Included with (L5P) Duramax 6.6L Turbo-Diesel V8 engine or (VYU) Snow Plow Prep/Camper Package. Free flow on (L8T) 6.6L V8 gas engine.)	Inc.
NZZ	Skid Plates protect the oil pan, front axle and transfer case (Included with (Z71) Z71 Off-Road Package or (VYU) Snow Plow Prep/Camper Package.)	Inc.

At the user's request, prices for this vehicle have been formulated on the basis of Initial Pricing for the vehicle, however GM cannot guarantee that Initial Pricing is available. This document contains information considered Confidential between GM and its Clients uniquely. The information provided is not intended for public disclosure. Prices, specifications, and availability are subject to change without notice, and do not include certain fees, taxes and charges that may be required by law or vary by manufacturer or region. Performance figures are guidelines only, and actual performance may vary. Photos may not represent actual vehicles or exact configurations. Content based on report preparer's input is subject to the accuracy of the input provided.
Data Version: 27916. Data Updated: Mar 6, 2026 2:47:00 AM UTC.



Napleton 151 Auto Group

Erin Damico | 920-623-5831 | edamico@napleton.autos

Village of Hortonville C57 8 BASE Fleet 2026 Chevrolet Silverado 2500HD (CK20943) 4WD Crew Cab 172 Work Truck (✔ Complete)

Quote: Village of Hortonville C57 Silverado 2500 Crew

ADDITIONAL EQUIPMENT - EXTERIOR

CODE	DESCRIPTION	MSRP
AKO	Glass, deep-tinted (Included with (PCV) WT Convenience Package.)	Inc.
CGN	Chevytec spray-on bedliner Black (does not include spray-on liner on tailgate due to Black composite inner panel) (Included with (Z6A) Gooseneck/5th Wheel Prep Package or (ANQ) Alaskan Snow Plow Special Edition. Not available with (ZW9) pickup bed delete. Available with Ship Thru code (SQE), (TCE) or (TCH), not available with any other Ship Thru code.)	\$545.00
DBG	Mirrors, outside power-adjustable vertical trailing with heated upper glass, lower convex mirrors, integrated turn signals, manual folding/extending (extends 3.31" [84.25mm]) (Standard on Regular Cab models. Not available with (PCV) WT Convenience Package or (ZLQ) WT Fleet Convenience Package on Regular Cab. Included and only available with (PCV) WT Convenience Package or (ZLQ) WT Fleet Convenience Package on Double and Crew Cab models.)	Inc.
KC9	Power outlet, bed mounted, 120-volt (400 watts shared with (KI4) interior power outlet) (Included and only available with (KI4) Power outlet. Not available with (ZW9) pickup bed delete.)	Inc.
QK2	Tailgate, Multi-Flex with six functional load/access features, NOTE: Auto release can be disabled if ball hitch is installed. See Owner's manual for details (Requires (PCV) WT Convenience Package or (ZLQ) WT Fleet Convenience Package. Not available with (ZW9) pickup bed delete.)	\$445.00
QT5	Tailgate, gate function manual with EZ Lift includes power lock and release (Included and only available with (PCV) WT Convenience Package or (ZLQ) WT Fleet Convenience Package.	Inc.
VK3	License plate kit, front (will be shipped to orders with ship-to states that require front license plate)	\$0.00

ADDITIONAL EQUIPMENT - INTERIOR

CODE	DESCRIPTION	MSRP
9L7	Upfitter switch kit, (5) Provides 3-30 amp and 2-20 amp configurable circuits to facilitate installation of aftermarket electrical accessories. Kit with all required parts will be shipped loose with the truck for installation by the dealer or upfitter at customer expense. Installation instructions and technical assistance available at www.gmupfitter.com.	\$150.00
C49	Defogger, rear-window electric (Included with (PCV) WT Convenience Package.)	Inc.
KI4	Power outlet, interior, 120-volt (400 watts shared with (KC9) bed mounted power outlet) (Requires (PCV) WT Convenience Package or (ZLQ) WT Fleet Convenience Package.)	\$225.00

ADDITIONAL EQUIPMENT - LPO

CODE	DESCRIPTION	MSRP
VQK	LPO, Molded splash guards, Black (dealer-installed) (Not available with (ZW9) pickup bed delete.)	\$275.00
VQO	LPO, Black work step (dealer-installed) (Not available with any other assist steps.)	\$575.00

At the user's request, prices for this vehicle have been formulated on the basis of Initial Pricing for the vehicle, however GM cannot guarantee that Initial Pricing is available. This document contains information considered Confidential between GM and its Clients uniquely. The information provided is not intended for public disclosure. Prices, specifications, and availability are subject to change without notice, and do not include certain fees, taxes and charges that may be required by law or vary by manufacturer or region. Performance figures are guidelines only, and actual performance may vary. Photos may not represent actual vehicles or exact configurations. Content based on report preparer's input is subject to the accuracy of the input provided.
Data Version: 27916. Data Updated: Mar 6, 2026 2:47:00 AM UTC.



Napleton 151 Auto Group

Erin Damico | 920-623-5831 | edamico@napleton.autos

Village of Hortonville C57 8 BASE Fleet 2026 Chevrolet Silverado 2500HD (CK20943) 4WD Crew Cab 172 Work Truck (✔ Complete)

Quote: Village of Hortonville C57 Silverado 2500 Crew

ADDITIONAL EQUIPMENT - OTHER

CODE	DESCRIPTION	MSRP
VQ2	Fleet Processing Option	\$0.00

CUSTOM EQUIPMENT

CODE	DESCRIPTION	MSRP
PLOW	WESTERN 8.5' MVP3 STAINLESS STEEL V-PLOW	\$8,632.00
Options Total		\$12,567.00

Standard Equipment

Package

Trailering Package includes trailer hitch, 7-pin connector and (CTT) Hitch Guidance (Deleted when (ZW9) pickup bed delete is ordered.)

Mechanical

Engine, 6.6L V8 with Direct Injection and Variable Valve Timing, gasoline, (401 hp [299 kW] @ 5200 rpm, 464 lb-ft of torque [629 N-m] @ 4000 rpm) (STD)

Transmission, 10-Speed automatic (STD) (Standard with (L8T) 6.6L V8 gas engine.)

Rear axle, 3.73 ratio (Requires (L8T) 6.6L V8 gas engine. Not available with (L5P) Duramax 6.6L Turbo-Diesel V8 engine.)

Durabed, pickup bed (STD)

GVWR, 10,650 lbs. (4831 kg) (STD) (Included and only available with CK20903 model and (L8T) 6.6L V8 gas engine with 18" or 20" wheels or CK20943 and (L8T) 6.6L V8 gas engine with 17" wheels.)

Push Button Start

Air filter, heavy-duty

Air filtration monitoring

Transfer case, two-speed electronic shift with push button controls (Requires 4WD models.)

Auto-locking rear differential

Four wheel drive

Cooling, external engine oil cooler

Cooling, auxiliary external transmission oil cooler

Battery, heavy-duty 720 cold-cranking amps/80 Amp-hr maintenance-free with rundown protection and retained accessory power (Included and only available with (L8T) 6.6L V8 gas engine.)

At the user's request, prices for this vehicle have been formulated on the basis of Initial Pricing for the vehicle, however GM cannot guarantee that Initial Pricing is available. This document contains information considered Confidential between GM and its Clients uniquely. The information provided is not intended for public disclosure. Prices, specifications, and availability are subject to change without notice, and do not include certain fees, taxes and charges that may be required by law or vary by manufacturer or region. Performance figures are guidelines only, and actual performance may vary. Photos may not represent actual vehicles or exact configurations. Content based on report preparer's input is subject to the accuracy of the input provided.

Data Version: 27916. Data Updated: Mar 6, 2026 2:47:00 AM UTC.



Napleton 151 Auto Group

Erin Damico | 920-623-5831 | edamico@napleton.autos

Village of Hortonville C57 8 BASE Fleet 2026 Chevrolet Silverado 2500HD (CK20943) 4WD Crew Cab 172 Work Truck (✔ Complete)

Quote: Village of Hortonville C57 Silverado 2500 Crew

Mechanical

- Alternator, 170 amps (Requires (L8T) 6.6L V8 gas engine.)
- Trailer brake controller, integrated
- Frame, fully-boxed, hydroformed front section and a fully-boxed stamped rear section
- Recovery hooks, front, frame-mounted, Black
- Suspension Package
- Steering, Recirculating Ball with smart flow power steering system
- Brakes, 4-wheel antilock, 4-wheel disc with DURALIFE rotors
- Brake lining wear indicator
- Capless Fuel Fill (Requires (L8T) 6.6L V8 gas engine. Not available with (ZW9) pickup bed delete.)
- Exhaust, single, side

Exterior

- Wheels, 17" (43.2 cm) painted steel, Silver (STD)
- Tires, LT245/75R17E all-season, blackwall (STD)
- Tire, spare LT245/75R17E all-season, blackwall (STD) (Included and only available with (QHJ) LT245/75R17E all-season, blackwall tires with (E63) Durabed, pickup bed. Available to order when (ZW9) pickup bed delete and (QHJ) LT245/75R17E all-season, blackwall tires are ordered.)
- Tire carrier lock keyed cylinder lock that utilizes same key as ignition and door (Deleted with (ZW9) pickup bed delete.)
- Bumpers, front, Black
- Bumpers, rear, Black
- CornerStep, rear bumper
- BedStep, Black integrated on forward portion of bed on driver and passenger side (Deleted when (ZW9) pickup bed delete is ordered.)
- Moldings, beltline, Black
- Cargo tie downs (12), fixed rated at 500 lbs per corner (Deleted with (ZW9) pickup bed delete.)
- Headlamps, halogen reflector with halogen Daytime Running Lamps
- IntelliBeam, automatic high beam on/off
- Taillamps with incandescent tail, stop and reverse lights
- Lamps, cargo area, cab mounted integrated with center high mount stop lamp, with switch in bank on left side of steering wheel

At the user's request, prices for this vehicle have been formulated on the basis of Initial Pricing for the vehicle, however GM cannot guarantee that Initial Pricing is available. This document contains information considered Confidential between GM and its Clients uniquely. The information provided is not intended for public disclosure. Prices, specifications, and availability are subject to change without notice, and do not include certain fees, taxes and charges that may be required by law or vary by manufacturer or region. Performance figures are guidelines only, and actual performance may vary. Photos may not represent actual vehicles or exact configurations. Content based on report preparer's input is subject to the accuracy of the input provided.
Data Version: 27916. Data Updated: Mar 6, 2026 2:47:00 AM UTC.



Napleton 151 Auto Group

Erin Damico | 920-623-5831 | edamico@napleton.autos

Village of Hortonville C57 8 BASE Fleet 2026 Chevrolet Silverado 2500HD (CK20943) 4WD Crew Cab 172 Work Truck (✔ Complete)

Quote: Village of Hortonville C57 Silverado 2500 Crew

Exterior

Mirrors, outside high-visibility vertical trailing lower convex mirrors, manual-folding/extending (extends 3.31" [84.25mm]), molded in Black (Not included on Regular Cab models.)

Mirror caps, Black

Glass, solar absorbing, tinted

Tailgate, standard (Deleted with (ZW9) pickup bed delete.)

Tailgate and bed rail protection cap, top

Tailgate, locking, utilizes same key as ignition and door (Upgraded to (QT5) EZ Lift power lock and release tailgate when (PCV) WT Convenience Package or (ZLQ) WT Fleet Convenience Package is ordered. Not available with (ZW9) pickup bed delete.)

Tailgate, gate function manual, no EZ Lift (Deleted with (ZW9) pickup bed delete.)

Door handles, Black grained

Entertainment

Audio system, Chevrolet Infotainment 3 system 7" diagonal HD color touchscreen, AM/FM stereo, Bluetooth audio streaming for 2 active devices, voice command pass-through to phone, Wireless Apple CarPlay and Wireless Android Auto compatibility (STD)

Audio system feature, 6-speaker system (Requires Crew Cab or Double Cab model.)

Wireless phone projection for Apple CarPlay and Android Auto

Bluetooth for phone connectivity to vehicle infotainment system

Wi-Fi Hotspot capable (Terms and limitations apply. See onstar.com or dealer for details.)

Interior

Seats, front 40/20/40 split-bench with covered armrest storage and under-seat storage (lockable) (STD)

Vinyl seat trim

Seat adjuster, driver 4-way manual

Seat adjuster, passenger 4-way manual

Seat, rear 60/40 folding bench (folds up), 3-passenger (includes child seat top tether anchor) (Requires Crew Cab or Double Cab model.)

Floor covering, rubberized-vinyl (Not available with LPO floor liners.)

Steering wheel, urethane

Steering column, Tilt-Wheel, manual with wheel locking security feature

Instrument cluster 6-gauge cluster featuring speedometer, fuel level, engine temperature, tachometer, voltage and oil pressure

At the user's request, prices for this vehicle have been formulated on the basis of Initial Pricing for the vehicle, however GM cannot guarantee that Initial Pricing is available. This document contains information considered Confidential between GM and its Clients uniquely. The information provided is not intended for public disclosure. Prices, specifications, and availability are subject to change without notice, and do not include certain fees, taxes and charges that may be required by law or vary by manufacturer or region. Performance figures are guidelines only, and actual performance may vary. Photos may not represent actual vehicles or exact configurations. Content based on report preparer's input is subject to the accuracy of the input provided.

Data Version: 27916. Data Updated: Mar 6, 2026 2:47:00 AM UTC.



Napleton 151 Auto Group

Erin Damico | 920-623-5831 | edamico@napleton.autos

Village of Hortonville C57 8 BASE Fleet 2026 Chevrolet Silverado 2500HD (CK20943) 4WD Crew Cab 172 Work Truck (✔ Complete)

Quote: Village of Hortonville C57 Silverado 2500 Crew

Interior

- Driver Information Center, 3.5" diagonal monochromatic display
- Exterior Temperature Display located in radio display
- Compass located in instrument cluster
- Rear Seat Reminder (Requires Crew Cab or Double Cab model.)
- Window, power front, drivers express up/down
- Window, power front, passenger express down
- Windows, power rear, express down (Not available with Regular Cab models.)
- Door locks, power
- Remote Keyless Entry with 2 transmitters
- Cruise control, electronic with set and resume speed, steering wheel-mounted
- USB Ports, 2, Charge/Data ports located on instrument panel
- Power outlet, front auxiliary, 12-volt
- Air conditioning, single-zone
- Air vents, rear, heating/cooling (Not available on Regular Cab models.)
- Mirror, inside rearview, manual tilt
- Assist handles front A-pillar mounted for driver and passenger, rear B-pillar mounted
- Chevrolet Connected Access capable (Subject to terms. See onstar.com or dealer for details.)

Safety-Mechanical

- Automatic Emergency Braking
- Front Pedestrian Braking
- StabiliTrak stability control system with Proactive Roll Avoidance and traction control, includes electronic trailer sway control and hill start assist

Safety-Exterior

- Daytime Running Lamps with automatic exterior lamp control

Safety-Interior

Airbags, Dual-stage frontal airbags for driver and front outboard passenger; Seat-mounted side-impact airbags for driver and front outboard passenger; Head-curtain airbags for front and rear outboard seating positions; Includes front outboard Passenger Sensing System for frontal outboard passenger airbag (Always use seat belts and child restraints. Children are safer when properly secured in a rear seat in the appropriate child restraint. See the Owner's Manual for more information.)

At the user's request, prices for this vehicle have been formulated on the basis of Initial Pricing for the vehicle, however GM cannot guarantee that Initial Pricing is available. This document contains information considered Confidential between GM and its Clients uniquely. The information provided is not intended for public disclosure. Prices, specifications, and availability are subject to change without notice, and do not include certain fees, taxes and charges that may be required by law or vary by manufacturer or region. Performance figures are guidelines only, and actual performance may vary. Photos may not represent actual vehicles or exact configurations. Content based on report preparer's input is subject to the accuracy of the input provided.
Data Version: 27916. Data Updated: Mar 6, 2026 2:47:00 AM UTC.



Napleton 151 Auto Group

Erin Damico | 920-623-5831 | edamico@napleton.autos

Village of Hortonville C57 8 BASE Fleet 2026 Chevrolet Silverado 2500HD (CK20943) 4WD Crew Cab 172 Work Truck (✔ Complete)

Quote: Village of Hortonville C57 Silverado 2500 Crew

Safety-Interior

OnStar Services capable (See onstar.com for details and limitations. Services vary by model. Service plan required.)

HD Rear Vision Camera (Deleted when (ZW9) pickup bed delete is ordered.)

Hitch Guidance dynamic single line to aid in trailer alignment for hitching (Deleted with (ZW9) pickup bed delete.)

Lane Departure Warning

Following Distance Indicator

Forward Collision Alert

Seat Belt Adjustable Guide Loops, front row only (Included and only available on Crew Cab and Double Cab models.)

Buckle to Drive prevents vehicle from being shifted out of Park until driver seat belt is fastened; times out after 20 seconds and encourages seat belt use, can be turned on and off in Settings menu

Rear Seat Belt Indicator (Requires Crew Cab or Double Cab model.)

Teen Driver a configurable feature that lets you activate customizable vehicle settings associated with a key fob, to help encourage safe driving behavior. It can limit certain available vehicle features, and it prevents certain safety systems from being turned off. An in-vehicle report card gives you information on driving habits and helps you to continue to coach your new driver

Tire Pressure Monitoring System

OnStar Basics (OnStar Fleet Basics for Fleet) Drive confidently with core OnStar services including remote commands, built-in voice assistance, real-time traffic and navigation, and Automatic Crash Response to help if you're in need. (Requires (UE1) OnStar. OnStar Basics includes remote commands, Navigation, Voice Assistance, and Automatic Crash Response, for eligible vehicles with compatible software. OnStar Basics is standard for 8 years; OnStar plan, working electrical system, cell reception and GPS signal required. OnStar links to emergency services. Service coverage varies with conditions and location. Service availability, features and functionality vary by device and software version. See onstar.com for details and limitations.)

Processing-Other

Trailer Information Label provides max trailer ratings for tongue weight, conventional, gooseneck and 5th wheel trailering (Not available with (ZW9) pickup bed delete.)

At the user's request, prices for this vehicle have been formulated on the basis of Initial Pricing for the vehicle, however GM cannot guarantee that Initial Pricing is available. This document contains information considered Confidential between GM and its Clients uniquely. The information provided is not intended for public disclosure. Prices, specifications, and availability are subject to change without notice, and do not include certain fees, taxes and charges that may be required by law or vary by manufacturer or region. Performance figures are guidelines only, and actual performance may vary. Photos may not represent actual vehicles or exact configurations. Content based on report preparer's input is subject to the accuracy of the input provided.

Data Version: 27916. Data Updated: Mar 6, 2026 2:47:00 AM UTC.



Napleton 151 Auto Group

Erin Damico | 920-623-5831 | edamico@napleton.autos

Village of Hortonville C57 8 BASE Fleet 2026 Chevrolet Silverado 2500HD (CK20943) 4WD Crew Cab 172 Work Truck (✔ Complete)

Quote: Village of Hortonville C57 Silverado 2500 Crew

WARRANTY

Warranty Note: <<< Preliminary 2026 Warranty >>>

Basic Years: 3

Basic Miles/km: 36,000

Drivetrain Years: 5

Drivetrain Miles/km: 60,000

Drivetrain Note: 3.0L & 6.0L Duramax® Turbo-Diesel engines, and certain commercial, government, and qualified fleet vehicles: 5 years/100,000 miles

Corrosion Years (Rust-Through): 6

Corrosion Years: 3

Corrosion Miles/km (Rust-Through): 100,000

Corrosion Miles/km: 36,000

Roadside Assistance Years: 5

Roadside Assistance Miles/km: 60,000

Roadside Assistance Note: 3.0L & 6.0L Duramax® Turbo-Diesel engines, and certain commercial, government, and qualified fleet vehicles: 5 years/100,000 miles

Maintenance Note: First Visit: 12 Months/12,000 Miles

Technical Specifications

Powertrain

Transmission

Drivetrain	Four Wheel Drive	Trans Order Code	MKM
Trans Type	10	Trans Description Cont.	Automatic
Trans Description Cont. Again	N/A	First Gear Ratio (:1)	4.54
Second Gear Ratio (:1)	2.87	Third Gear Ratio (:1)	2.06
Fourth Gear Ratio (:1)	1.72	Fifth Gear Ratio (:1)	1.48
Sixth Gear Ratio (:1)	1.26	Reverse Ratio (:1)	4.54
Clutch Size	N/A	Trans Power Take Off	N/A
Final Drive Axle Ratio (:1)	N/A	Transfer Case Model	N/A
Transfer Case Gear Ratio (:1), High	N/A	Transfer Case Gear Ratio (:1), Low	N/A
Transfer Case Power Take Off	N/A	Seventh Gear Ratio (:1)	1.00
Eighth Gear Ratio (:1)	0.85	Ninth Gear Ratio (:1)	0.69
Tenth Gear Ratio (:1)	0.63		

Mileage

EPA Fuel Economy Est - Hwy	N/A	Cruising Range - City	N/A
----------------------------	-----	-----------------------	-----

At the user's request, prices for this vehicle have been formulated on the basis of Initial Pricing for the vehicle, however GM cannot guarantee that Initial Pricing is available. This document contains information considered Confidential between GM and its Clients uniquely. The information provided is not intended for public disclosure. Prices, specifications, and availability are subject to change without notice, and do not include certain fees, taxes and charges that may be required by law or vary by manufacturer or region. Performance figures are guidelines only, and actual performance may vary. Photos may not represent actual vehicles or exact configurations. Content based on report preparer's input is subject to the accuracy of the input provided.

Data Version: 27916. Data Updated: Mar 6, 2026 2:47:00 AM UTC.



Napleton 151 Auto Group

Erin Damico | 920-623-5831 | edamico@napleton.autos

Village of Hortonville C57 8 BASE Fleet 2026 Chevrolet Silverado 2500HD (CK20943) 4WD Crew Cab 172 Work Truck (✔ Complete)

Quote: Village of Hortonville C57 Silverado 2500 Crew

Powertrain

Mileage

EPA Fuel Economy Est - City	N/A	Fuel Economy Est-Combined	N/A
Cruising Range - Hwy	N/A	Estimated Battery Range	N/A

Engine

Engine Order Code	L8T	Engine Type	Gas V8
Displacement	6.6L/-TBD-	Fuel System	Direct Injection
SAE Net Horsepower @ RPM	401 @ 5200	SAE Net Torque @ RPM	464 @ 4000
Engine Oil Cooler	Yes		

Electrical

Cold Cranking Amps @ 0° F (Primary)	720	Cold Cranking Amps @ 0° F (2nd)	700
Cold Cranking Amps @ 0° F (3rd)	N/A	Maximum Alternator Capacity (amps)	220

Cooling System

Total Cooling System Capacity	N/A		
-------------------------------	-----	--	--

Traction Battery

Usable/net Traction Battery Capacity (kWh)	N/A	Gross Traction Battery Capacity (kWh)	N/A
--	-----	---------------------------------------	-----

Vehicle

Emissions

Tons/yr of CO2 Emissions @ 15K mi/year	N/A	EPA Greenhouse Gas Score	N/A
--	-----	--------------------------	-----

Chassis

Weight Information

Standard Weight - Front	0.00 lbs	Standard Weight - Rear	0.00 lbs
Base Curb Weight	N/A	Gross Axle Wt Rating - Front	6000 lbs
Gross Axle Wt Rating - Rear	6600 lbs	Curb Weight - Front	4070 lbs
Curb Weight - Rear	2848 lbs	Option Weight - Front	0.00 lbs

At the user's request, prices for this vehicle have been formulated on the basis of Initial Pricing for the vehicle, however GM cannot guarantee that Initial Pricing is available. This document contains information considered Confidential between GM and its Clients uniquely. The information provided is not intended for public disclosure. Prices, specifications, and availability are subject to change without notice, and do not include certain fees, taxes and charges that may be required by law or vary by manufacturer or region. Performance figures are guidelines only, and actual performance may vary. Photos may not represent actual vehicles or exact configurations. Content based on report preparer's input is subject to the accuracy of the input provided.

Data Version: 27916. Data Updated: Mar 6, 2026 2:47:00 AM UTC.



Napleton 151 Auto Group

Erin Damico | 920-623-5831 | edamico@napleton.autos

Village of Hortonville C57 8 BASE Fleet 2026 Chevrolet Silverado 2500HD (CK20943) 4WD Crew Cab
172 Work Truck (✔ Complete)

Quote: Village of Hortonville C57 Silverado 2500 Crew

Chassis

Weight Information

Option Weight - Rear	0.00 lbs	Reserve Axle Capacity - Front	1930.00 lbs
Reserve Axle Capacity - Rear	3752.00 lbs	As Spec'd Curb Weight	6918.00 lbs
As Spec'd Payload	4132.00 lbs	Maximum Payload Capacity	4132.00 lbs
Gross Combined Wt Rating	26000 lbs	Gross Axle Weight Rating	12600.00 lbs
Curb Weight	6918.00 lbs	Reserve Axle Capacity	5682.00 lbs
Total Option Weight	0.00 lbs	Payload Weight Front	0 lbs
Payload Weight Rear	0 lbs	Gross Vehicle Weight Rating	11050.00 lbs

Trailer

Dead Weight Hitch - Max Trailer Wt.	5000 lbs	Dead Weight Hitch - Max Tongue Wt.	500 lbs
Wt Distributing Hitch - Max Trailer Wt.	16000 lbs	Wt Distributing Hitch - Max Tongue Wt.	1600 lbs
Fifth Wheel Hitch - Max Trailer Wt.	18280 lbs	Fifth Wheel Hitch - Max Tongue Wt.	4570 lbs
Maximum Trailering Capacity	20000 lbs		

Frame

Frame Type	Hydroformed	Sect Modulus Rails Only	N/A
Frame RBM	N/A	Frame Strength	N/A
Frame Thickness	N/A		

Suspension

Suspension Type - Front	Short/Long Arm	Suspension Type - Rear	Multi-Leaf Springs
Spring Capacity - Front	N/A	Spring Capacity - Rear	N/A
Axle Type - Front	N/A	Axle Type - Rear	N/A
Axle Capacity - Front	N/A	Axle Capacity - Rear	N/A
Axle Ratio (:1) - Front	N/A	Axle Ratio (:1) - Rear	3.73
Shock Absorber Diameter - Front	51 mm	Shock Absorber Diameter - Rear	51 mm
Stabilizer Bar Diameter - Front	1.38 in	Stabilizer Bar Diameter - Rear	N/A

At the user's request, prices for this vehicle have been formulated on the basis of Initial Pricing for the vehicle, however GM cannot guarantee that Initial Pricing is available. This document contains information considered Confidential between GM and its Clients uniquely. The information provided is not intended for public disclosure. Prices, specifications, and availability are subject to change without notice, and do not include certain fees, taxes and charges that may be required by law or vary by manufacturer or region. Performance figures are guidelines only, and actual performance may vary. Photos may not represent actual vehicles or exact configurations. Content based on report preparer's input is subject to the accuracy of the input provided.
Data Version: 27916. Data Updated: Mar 6, 2026 2:47:00 AM UTC.



Napleton 151 Auto Group

Erin Damico | 920-623-5831 | edamico@napleton.autos

Village of Hortonville C57 8 BASE Fleet 2026 Chevrolet Silverado 2500HD (CK20943) 4WD Crew Cab 172 Work Truck (✔ Complete)

Quote: Village of Hortonville C57 Silverado 2500 Crew

Chassis

Tires

Front Tire Order Code	QF6	Rear Tire Order Code	QF6
Spare Tire Order Code	ZYG	Front Tire Size	LT275/70R18
Rear Tire Size	LT275/70R18	Spare Tire Size	LT275/70R18
Front Tire Capacity	N/A	Rear Tire Capacity	N/A
Spare Tire Capacity	N/A	Revolutions/Mile @ 45 mph - Front	N/A
Revolutions/Mile @ 45 mph - Rear	N/A	Revolutions/Mile @ 45 mph - Spare	N/A

Wheels

Front Wheel Size	18 x -TBD- in	Rear Wheel Size	18 x -TBD- in
Spare Wheel Size	18 x -TBD- in	Front Wheel Material	Steel
Rear Wheel Material	Steel	Spare Wheel Material	N/A

Steering

Steering Type	Pwr	Steering Ratio (:1), Overall	N/A
Steering Ratio (:1), On Center	N/A	Steering Ratio (:1), At Lock	N/A
Turning Diameter - Curb to Curb	57 ft	Turning Diameter - Wall to Wall	N/A

Brakes

Brake Type	Pwr	Brake ABS System	4-Wheel
Brake ABS System (Second Line)	N/A	Disc - Front (Yes or)	Yes
Disc - Rear (Yes or)	Yes	Front Brake Rotor Diam x Thickness	14.0 x 1.6 in
Rear Brake Rotor Diam x Thickness	14.1 x 1.3 in	Drum - Rear (Yes or)	N/A
Rear Drum Diam x Width	N/A		

Fuel Tank

Fuel Tank Capacity, Approx	36 gal	Aux Fuel Tank Capacity, Approx	N/A
Fuel Tank Location	N/A	Aux Fuel Tank Location	N/A

At the user's request, prices for this vehicle have been formulated on the basis of Initial Pricing for the vehicle, however GM cannot guarantee that Initial Pricing is available. This document contains information considered Confidential between GM and its Clients uniquely. The information provided is not intended for public disclosure. Prices, specifications, and availability are subject to change without notice, and do not include certain fees, taxes and charges that may be required by law or vary by manufacturer or region. Performance figures are guidelines only, and actual performance may vary. Photos may not represent actual vehicles or exact configurations. Content based on report preparer's input is subject to the accuracy of the input provided.
Data Version: 27916. Data Updated: Mar 6, 2026 2:47:00 AM UTC.



Napleton 151 Auto Group

Erin Damico | 920-623-5831 | edamico@napleton.autos

Village of Hortonville C57 8 BASE Fleet 2026 Chevrolet Silverado 2500HD (CK20943) 4WD Crew Cab 172 Work Truck (✔ Complete)

Quote: Village of Hortonville C57 Silverado 2500 Crew

Dimensions

Interior Dimensions

Passenger Capacity	6	Front Head Room	43.03 in
Front Leg Room	44.53 in	Front Shoulder Room	66.02 in
Front Hip Room	61.18 in	Second Head Room	40.12 in
Second Leg Room	43.4 in	Second Shoulder Room	65.3 in
Second Hip Room	60.24 in		

Exterior Dimensions

Wheelbase	172 in	Length, Overall w/o rear bumper	N/A
Length, Overall w/rear bumper	N/A	Length, Overall	266.06 in
Width, Max w/o mirrors	81.85 in	Height, Overall	79.65 in
Overhang, Front	N/A	Overhang, Rear w/o bumper	N/A
Front Bumper to Back of Cab	N/A	Cab to Axle	55.24 in
Cab to End of Frame	N/A	Ground to Top of Load Floor	N/A
Ground to Top of Frame	N/A	Frame Width, Rear	N/A
Ground Clearance, Front	10.08 in	Ground Clearance, Rear	10.08 in
Body Length	0.00 ft	Cab to Body	N/A

Cargo Area Dimensions

Cargo Box Length @ Floor	98.27 in	Cargo Box Width @ Top, Rear	N/A
Cargo Box Width @ Floor	71.4 in	Cargo Box Width @ Wheelhousings	50.55 in
Cargo Box (Area) Height	21 in	Tailgate Width	N/A
Cargo Volume	83.5 ft ³	Ext'd Cab Cargo Volume	N/A

At the user's request, prices for this vehicle have been formulated on the basis of Initial Pricing for the vehicle, however GM cannot guarantee that Initial Pricing is available. This document contains information considered Confidential between GM and its Clients uniquely. The information provided is not intended for public disclosure. Prices, specifications, and availability are subject to change without notice, and do not include certain fees, taxes and charges that may be required by law or vary by manufacturer or region. Performance figures are guidelines only, and actual performance may vary. Photos may not represent actual vehicles or exact configurations. Content based on report preparer's input is subject to the accuracy of the input provided.

Data Version: 27916. Data Updated: Mar 6, 2026 2:47:00 AM UTC.